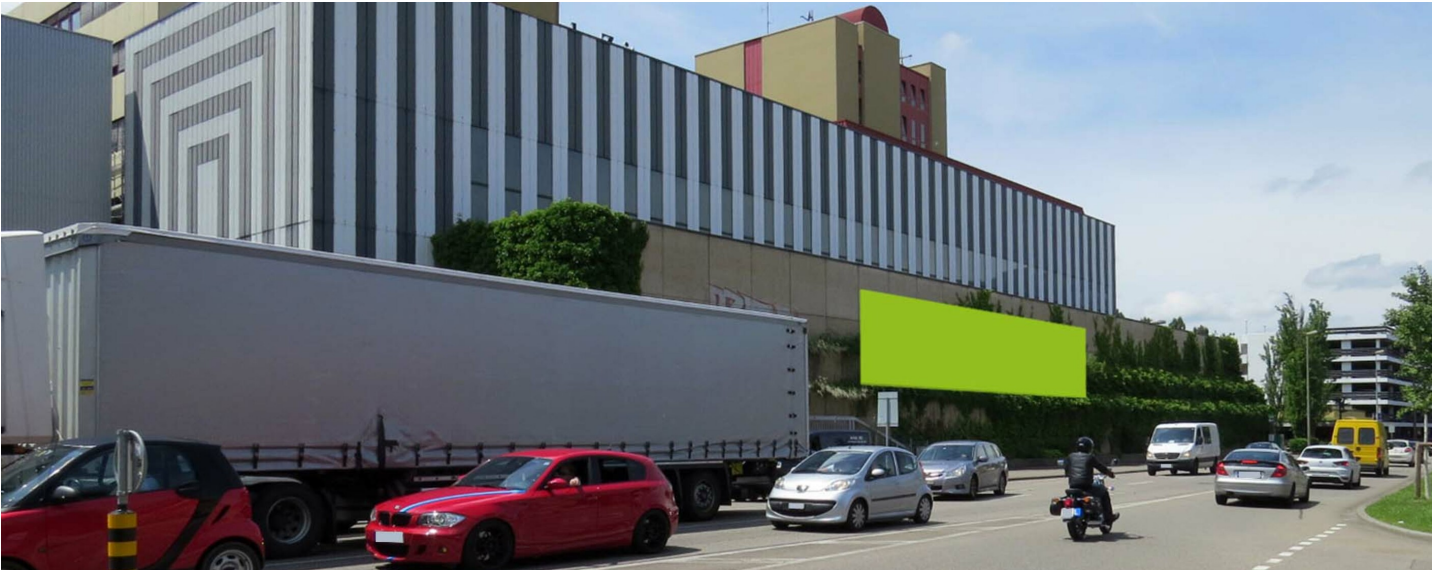


BASEL, MOTORWAY A2 ENTRY/EXIT, BAZ-BUILDING

Hochbergerstrasse 15



FACTS AND FIGURES	
Dimensions	ca. W 27.25 m x H 3.75 m
Total size	ca. 102.19 m2
Availability	Permanent
Illumination	Not available
Frequency per month	ca. 950'000
Visibility	Front, sideways/oblique

- LOCATION | DESCRIPTION
- Large numbers of viewings through high traffic volume
 - Nearby Stücki Shoppingcenter with shops like Guess, Companys, Globus, H&M, etc.
 - Along commuting line
 - Extended viewing time with traffic lights and during the rush hours (traffic jam potential)
 - Motorway A2 to and from Basel city centre/France/Germany, etc.
 - Congestion area and junction with traffic lights
 - Attractive rates for long term display bookings (3, 6, 12 months)

- PERMISSION
- Outline approval existing, individual artwork requires authorization

- RESTRICTIONS
- No restrictions concerning the number of words
 - No alcohol, tobacco, sex, political or real estate advertisement



- SITUATION PLAN
- Hochbergerstrasse 15