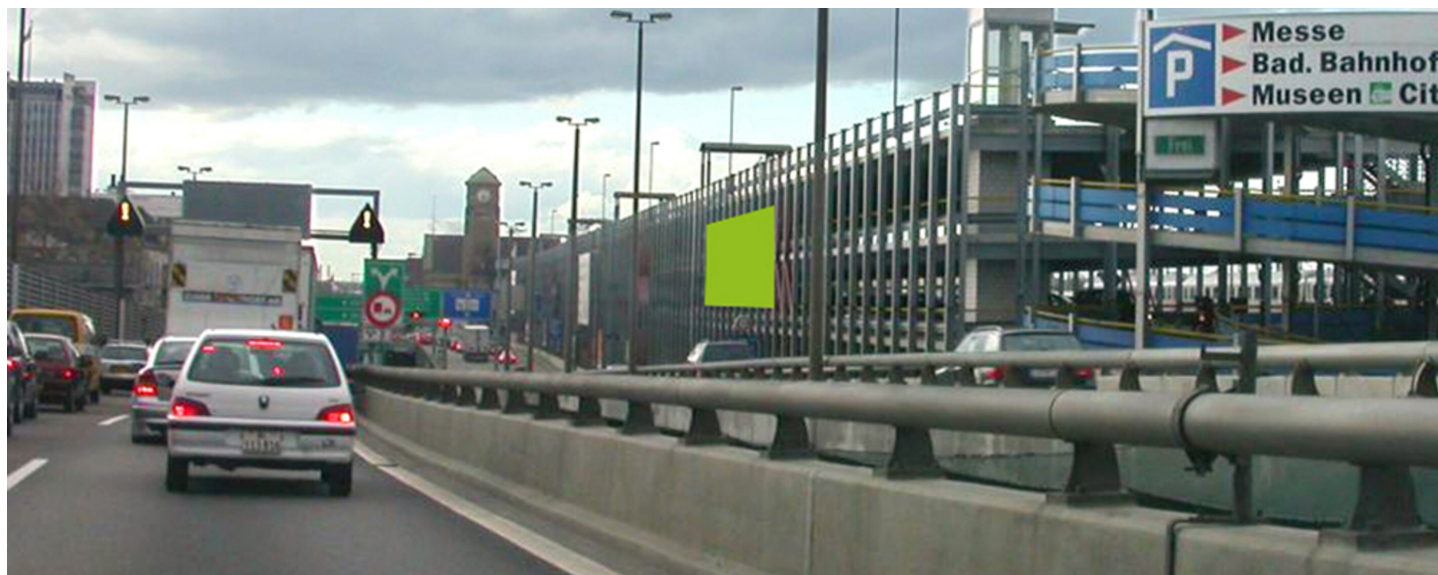


BASEL, PARKING BADISCHER BHF., MOTORWAY A2, SURFACE 5



FACTS AND FIGURES

Dimensions	W 15.18 m x H 5.87 m
Total size	89.11 m2
Availability	Permanent
Illumination	yes, Inclusive
Frequency per month	ca. 890'000
Visibility	Sideways/oblique

LOCATION | DESCRIPTION

- Unique position: right on the motorway A2/motorway exit city/exhibition
- Only few steps away from the exhibition center Messe Basel
- Nearby IBM, F. Hoffmann-La Roche, Novartis, Syngenta Tower, McDonalds, Tingly Museum, etc.
- In direction of Stuck Shopping Centre, City/Messe, EuroAirport, German and Swiss highway customs
- Congestion area year-round
- Poster is fitted on eye-level
- Multi-lane road traffic

PERMISSION

- Outline approval existing, individual artwork requires authorization

RESTRICTIONS

- No restrictions concerning the number of words
- No alcohol, tobacco, sex or political advertisement



SITUATION PLAN

[Google Map](#)

Schwarzwaldstrasse 160